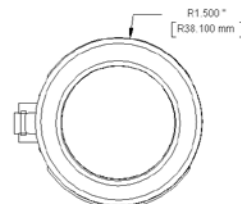
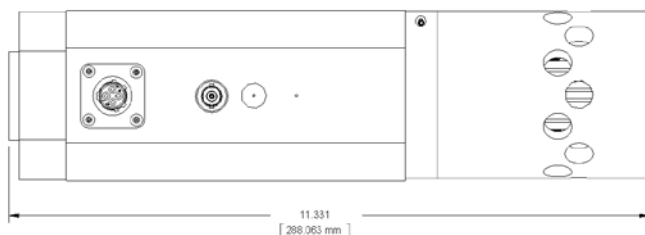
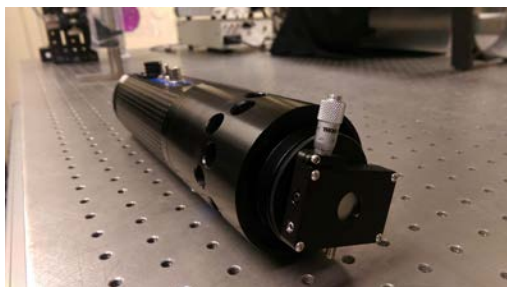


LMS-XXX LED Light Source

(Product ID: LMS-XXX)

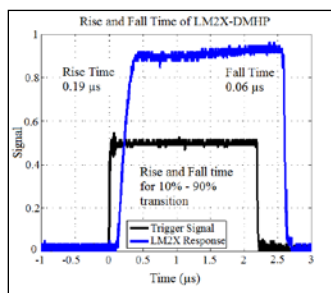
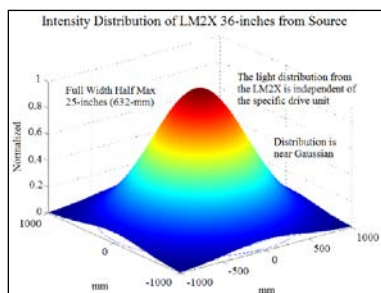
The LMS-XXX is a 2-inch, air-cooled LED light source used for schlieren and shadowgraph applications. The LMS-XXX can operate in continuous/long-pulsed (DC) or short-pulsed (HP) mode. In HP mode, the peak intensity is about 4x the the peak of the DC output with a rise and fall of time <100 ns. In HP mode, a built-in safety circuit automatically shuts down the drive circuits if the duty factor limit is reached.

The LMS-XXX features a variable width slit to adjust the amount of output light from the module. Power supply and carrying case are included with the LED. The wavelength of the LMS-XXX is user defined and based on available LED wavelengths. XXX denotes wavelength in nanometers.



SPECIFICATIONS

Output Optical Power	~2-3 W (DC), ~1 W (HP)
Input Power	110-250VAC, 50/60 Hz
Power Supply	24 VDC @ 6.6 A
Stability	~0.1 % per hour after warm-up
Maximum duty cycle	100% (DC), 5% (HP)
Rise time (10% - 90%)	< 5- μ s (DC), < 200-ns (HP)
Fall time (90% - 10%)	<75- μ s (DC), < 100-ns (HP)
Operating temperature range	-10°C to 60°C
Wavelength (XXX).....	User Specified
ECCN	EAR99



Innovative Scientific Solutions, Inc.
7610 McEwen Road, Dayton, OH 45459
Phone (937) 630-3012 Fax (937) 630-3015

email: spalluconi@innsi.com
web: www.psp-tsp.com

Any and all underlying information and technology contained in this document may be subject to U.S. export controls, including the Export Administration Act (50 U.S.C. Appx. §§ 2401 et seq.) and the Export Administration Regulations ("EAR", 50 C.F.R. Parts 730-774), and may be subject to export or import regulations in other countries. You are responsible for complying with all trade regulations and laws both foreign and domestic. Except as authorized by law or distributor agreement with ISSI, you agree and warrant not to export or re-export the information to any country, or to any person, entity, or end-user subject to U.S. export controls, including without limitation persons or entities listed on the U.S. Department of Commerce Bureau of Export Administration's Denied Parties List and the U.S. Department of Treasury's Specially Designated Nationals. You further represent and warrant that no U.S. federal agency has suspended, revoked, or denied your export privileges.